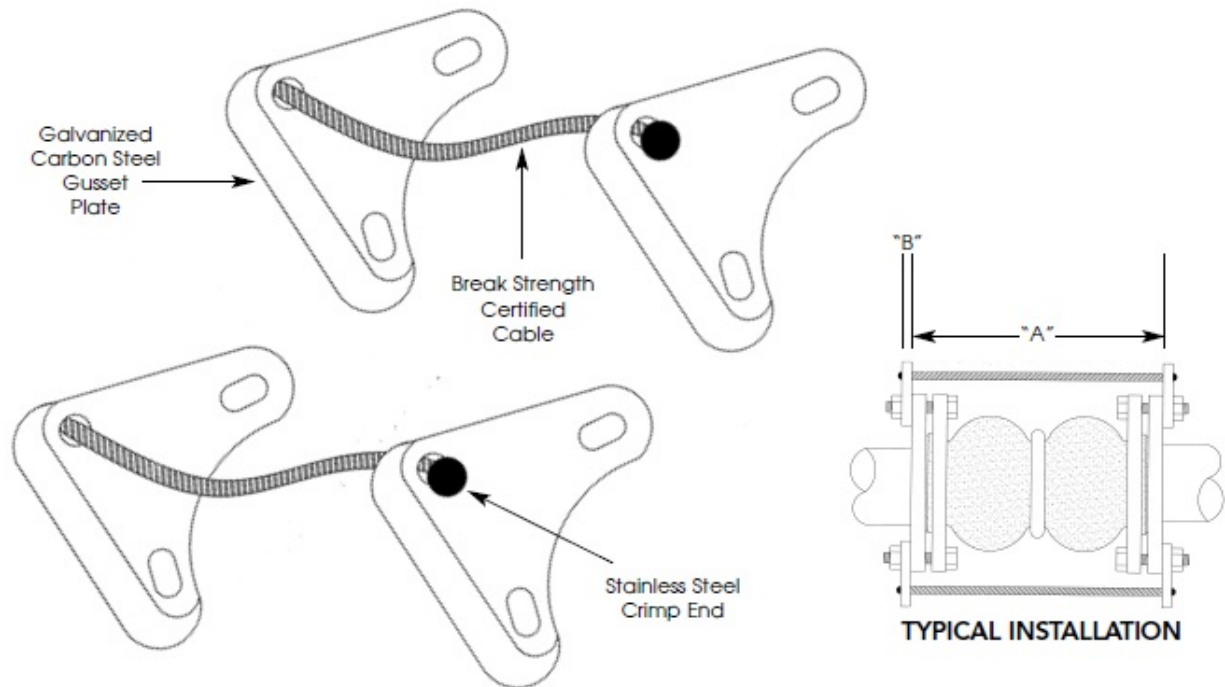


# STOPLINK™ Control Cables for Single & Double Spheres



Quantity for Single Sphere	Quantity for Double Sphere	Nominal Size (In.)	"A" Distance between gussets (fully extended)		"B" Gusset Thickness (In.)	Maximum Pressure Working/Test (PSI)		Wright per set (Lbs)
			Single Sphere	Double Sphere		One Set	Two Sets	
		2	7 $\frac{1}{4}$	9 $\frac{1}{4}$	$\frac{3}{8}$	225/338	-	5.0
		2 $\frac{1}{2}$	8 $\frac{1}{4}$	9 $\frac{1}{2}$	$\frac{3}{8}$	225/338	-	5.0
		3	8 $\frac{1}{4}$	9 $\frac{1}{2}$	$\frac{3}{8}$	225/338	-	5.0
		4	8 $\frac{1}{4}$	11 $\frac{1}{4}$	$\frac{3}{8}$	225/338	-	5.0
		5	8 $\frac{1}{4}$	11 $\frac{1}{4}$	$\frac{1}{2}$	225/338	-	7.0
		6	8 $\frac{3}{4}$	12	$\frac{1}{2}$	225/338	-	7.0
		8	8 $\frac{3}{4}$	16 $\frac{1}{4}$	$\frac{1}{2}$	225/338	-	13.0
		10	10 $\frac{1}{4}$	16 $\frac{1}{4}$	$\frac{3}{4}$	175/265	225/338	14.0
		12	11	16 $\frac{1}{2}$	$\frac{3}{4}$	125/190	225/338	14.0

Cables are factory pre-set for maximum axial extension when attached to standard ANSI 150# forged steel flanges

PROJECT	
CUSTOMER	
ENGINEER	
REPRESENTATIVE	
DRAWING #	



6801 Crossbow Drive  
 East Syracuse, NY USA 13057-1026  
 315/437-1611 • Fax 315/437-1903  
[www.flexhose.com](http://www.flexhose.com) • 1.877.TRI FLEX

Rev. 201806