

# Tri-Flex Loop® Expansion Loops and Seismic Connectors



I.D. (IN.)	LENGTH (IN.)		PRESSURE (PSI) @ Ambient Temperature	MOVEMENTS						DRAIN PORT	SPRING RATE @125PSI	WT. (LBS)
	A	B		COMPRESSION (IN.)	EXTENSION (IN.)	PARALLEL (IN.)	ROTATION "X" AXIS (°)	NON-PARALLEL "Y" AXIS (IN.)				
<b>TFL4SMP</b>												
1.0	26.25	20.25	175	4	4	4	30°	2	½	7	11	
1.25	30.00	22.50	175	4	4	4	25°	2	½	9	13	
1.50	32.50	24.50	175	4	4	4	25°	2	½	10	19	
2.0	37.50	28.25	175	4	4	4	20°	2	½	13	25	
2.5	41.50	31.00	175	4	4	4	20°	2	¾	23	40	
3.0	45.75	34.00	175	4	4	4	15°	2	¾	33	51	
4.0	50.25	40.00	175	4	4	4	10°	2	¾	53	85	

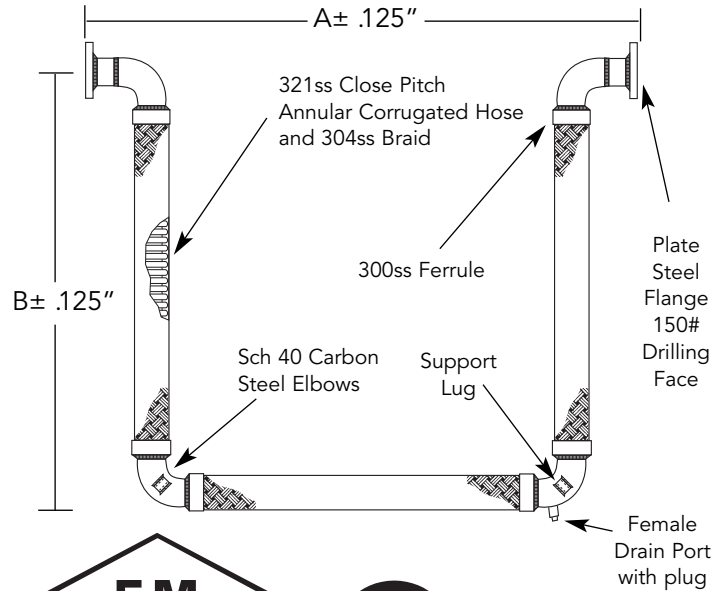
Manufactured with 5:1 safety factor. All Tri-Flex Loops are 100% hydrostatic tested at the factory to 262 psig.

U.S. PATENT NO. 5,803,506



**LISTED**

Tri-Flex Loop® Stainless steel for 1"-4" for compressed and combustible gases at pressures not exceeding 175 PSI ambient temperature. 33NB



**APPROVED**

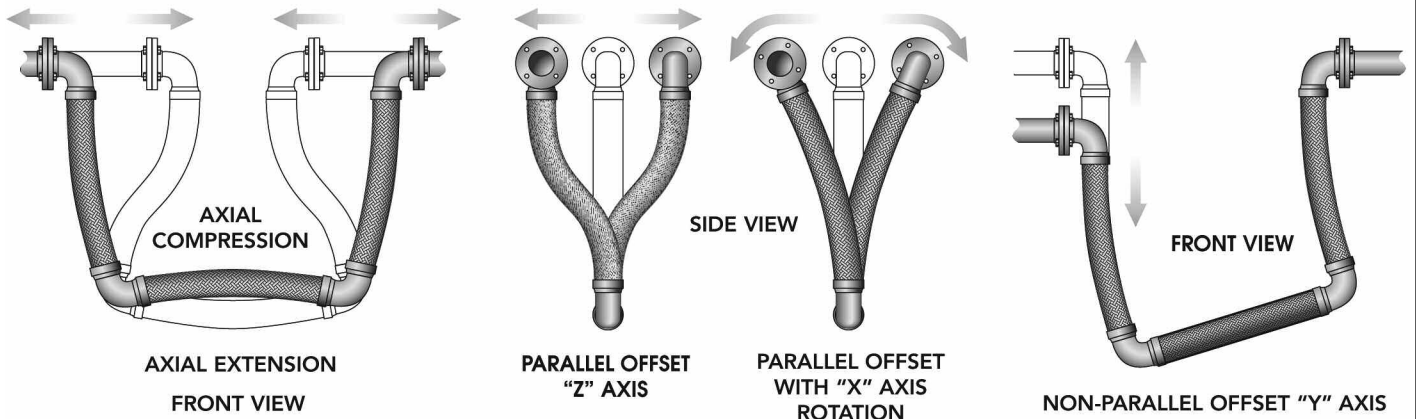
For Fire Protection Systems



CSA standard B-51 certified. Inspected and tested by the Technical Standards and Safety Authority of Canada.

## Tri-Flex Loop® Movement Capabilities

Tri-Flex Loop is capable of handling the following movements simultaneously:



PROJECT	
CUSTOMER	
ENGINEER	
REPRESENTATIVE	
DRAWING #	



6801 Crossbow Drive  
 East Syracuse, NY USA 13057-1026  
 315/437-1611 • Fax 315/437-1903  
[www.flexhose.com](http://www.flexhose.com) • 1.877.TRI FLEX

WS201508

Expansion Loops & Seismic Connectors

**TFL4SMP-UL 1"-4" I.D.**