

Tri-Flex Loop® Expansion Loops and Seismic Connectors



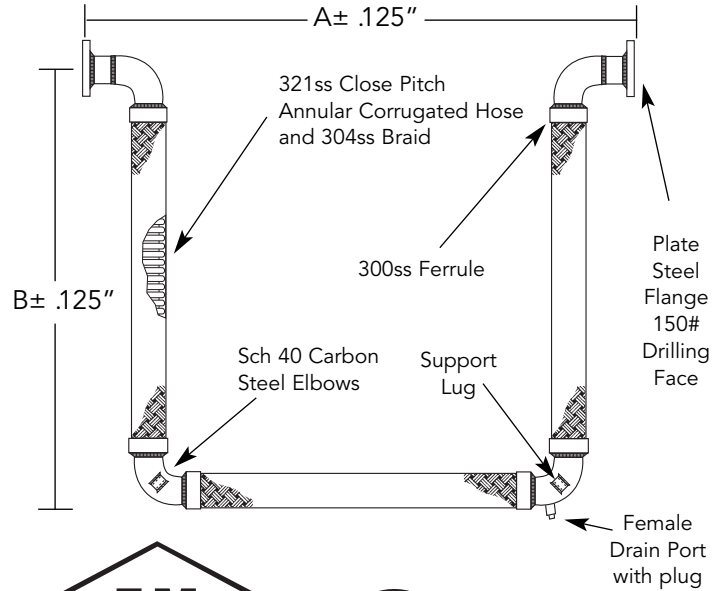
| I.D. (IN.) | LENGTH (IN.) | | PRESSURE (PSI) @ Ambient Temperature | MOVEMENTS | | | | | | | WT. (LBS) |
|----------------|--------------|-------|--------------------------------------|-------------------|-----------------|----------------|-----------------------|-----------------------------|------------|----------------------|-----------|
| | A | B | | COMPRESSION (IN.) | EXTENSION (IN.) | PARALLEL (IN.) | ROTATION "X" AXIS (°) | NON-PARALLEL "Y" AXIS (IN.) | DRAIN PORT | SPRING RATE @ 125PSI | |
| TFL2SMP | | | | | | | | | | | |
| 1.0 | 21.50 | 15.75 | 175 | 2 | 2 | 2 | 20° | 1 | ½ | 7 | 10 |
| 1.25 | 25.50 | 18.00 | 175 | 2 | 2 | 2 | 15° | 1 | ½ | 9 | 12 |
| 1.50 | 27.50 | 19.50 | 175 | 2 | 2 | 2 | 15° | 1 | ½ | 10 | 17 |
| 2.0 | 31.50 | 22.25 | 175 | 2 | 2 | 2 | 10° | 1 | ½ | 13 | 22 |
| 2.5 | 35.50 | 25.00 | 175 | 2 | 2 | 2 | 10° | 1 | ¾ | 23 | 37 |
| 3.0 | 39.75 | 28.00 | 175 | 2 | 2 | 2 | 10° | 1 | ¾ | 33 | 48 |
| 4.0 | 43.25 | 33.00 | 175 | 2 | 2 | 2 | 5° | 1 | ¾ | 53 | 79 |

Manufactured with 5:1 safety factor. All Tri-Flex Loops are 100% hydrostatic tested at the factory to 262 psig.



LISTED

Tri-Flex Loop® Stainless steel 1"-4" for compressed and combustible gases at pressures not exceeding 175 psi at ambient temperature. The term combustible gases, as used herein, means gases such as liquefied petroleum gases, and manufactured and natural gases. 33NB



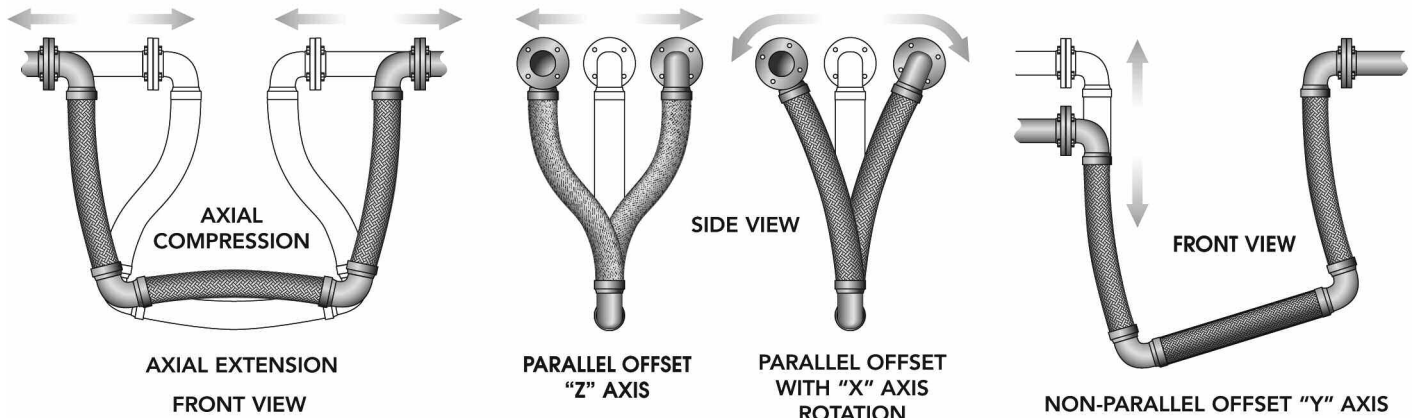
APPROVED
For Fire Protection Systems



CSA standard B-51 certified. Inspected and tested by the Technical Standards and Safety Authority of Canada.

Tri-Flex Loop® Movement Capabilities

Tri-Flex Loop is capable of handling the following movements simultaneously:



| | |
|----------------|--|
| PROJECT | |
| CUSTOMER | |
| ENGINEER | |
| REPRESENTATIVE | |
| DRAWING # | |



6801 Crossbow Drive
East Syracuse, NY USA 13057-1026
315/437-1611 • Fax 315/437-1903
www.flexhose.com • 1.877.TRI FLEX